

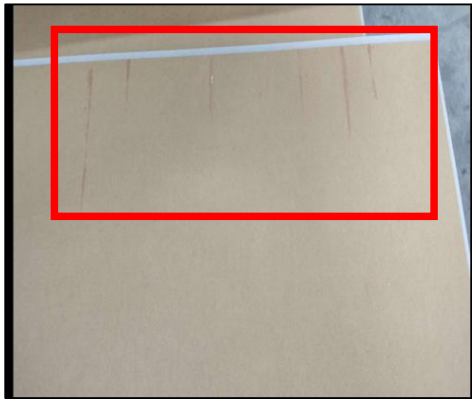
INVESTIGATION REPORT FOR GLUE STAIN OF 516230200 LOUVRE 2 MJX EUROPE

DIRECT CAUSE METHOD (MATERIAL)

W1: Glue stain occurred due to splashing.

W2: During running the glue was sprinkled in the glue roller to the splashing cover.

W3: The glue viscosity was 2.3 dPa and it was in standard viscosity of 1.8 dPa - 2.5 dPa
>SB with splashing
>SF without splashing



PRODUCTION ACTION PLAN

Immediate Action:

- > Cleaning of splashing cover and glue plate
- > Putting mylar film in the sheet guide (purpose: thin splash of glue)
- > Reduced standard speed from 90 to 50 but there is a bit of splashing
- > Using of white glue on sheetboard



Prepared by:

PRODUCTION IE

Reviewed by:

Noemi Cepeda
PRODUCTION SUPERVISOR